



# NDA

National  
Development  
Agency



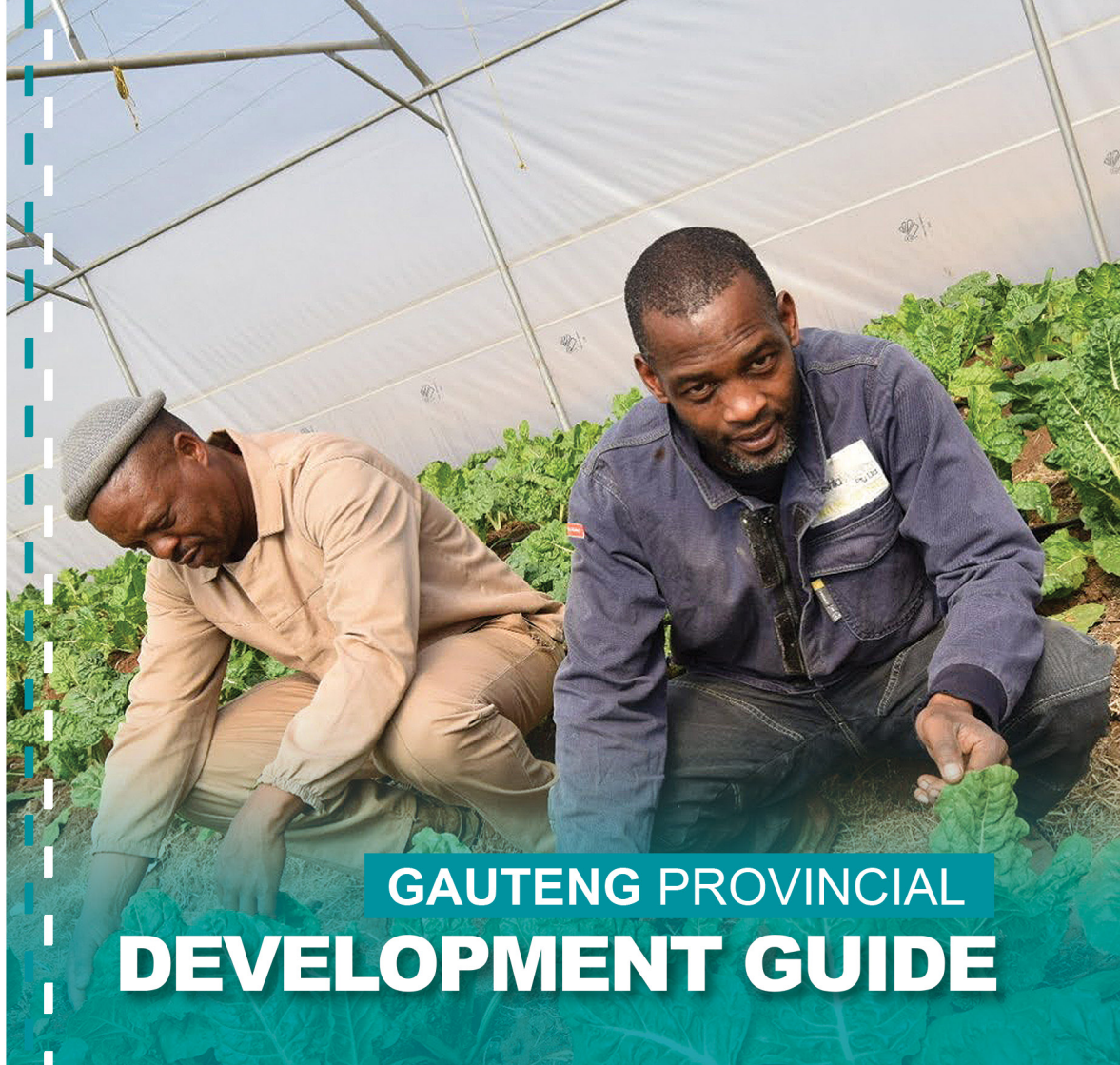
social development

Department:  
Social Development  
REPUBLIC OF SOUTH AFRICA



sassa

SOUTH AFRICAN SOCIAL SECURITY AGENCY



## GAUTENG PROVINCIAL DEVELOPMENT GUIDE





Bona Lesedi Disability Centre - Page 17



Letimbe Designer & Projects Primary Cooperative Ltd. - Page 21



Tshedimosho Farm Hub - Page 27

# TABLE OF CONTENTS

1.	About the NDA	1	8.3	Hlubuko Farming and Agricultural Primary Cooperative	19
2.	Foreword by Board Chairperson	3	8.4	Letimbe Designer & Projects Primary Cooperative Ltd.	21
3.	NDA CEO Overview	5	8.5	Boiketlo Foundation	23
4.	NDA Partnership Call to Action	7	8.6	Reotlwile - Sizwile Primary Cooperative	25
5.	Provincial Profile	9	8.7	Tshedimosho Farm Hub	27
6.	Message from NDA COO	11	8.8	Wheels of Change	29
7.	Provincial response to poverty eradication	13	9.	Directory of other funded projects	31
8.	<b>Funded projects profiles:</b>		10.	Partnership Pledge Form	34
8.1	Amazing Grace Day and Night Care	15	11.	Notes	35
8.2	Bona Lesedi Disability Centre	17			



# About the National Development Agency

The National Development Agency (NDA) is an agency of government tasked with the mandate to contribute towards the eradication of poverty and its causes in South Africa.



## OUR MANDATE

Our primary mandate is to contribute towards the eradication of poverty and its causes by granting funds to civil society organisations (CSOs) to:

- Implement development projects in poor communities.
- Strengthen the institutional capacity of CSOs that provide services to impoverished communities.

The secondary mandate is to:

- Promoting consultation, dialogue and the sharing of development experience between CSOs and the relevant organs of state.
- Promoting debates on national development policy.
- Undertaking research and publication aimed at providing the basis for development policy.

## Gauteng Provincial Office:

Ground Floor  
26 Wellington Road  
Park town  
2193

Tel: (011) 492 1494

Email: [gautengprovince@nda.org.za](mailto:gautengprovince@nda.org.za)



## Foreword by NDA Board Chairperson



Ms Nozabelo Ruth Bhengu

*"The Bill of Rights is a cornerstone of democracy in South Africa. It enshrines the rights of all people in our country and affirms the democratic values of human dignity, equality and freedom. (2) The state must respect, protect, promote and fulfil the rights in the Bills of Rights."*

The South African Constitution is one of the most advanced Constitutions in the world, however, since the dawn of democracy, the country has been struggling to redress the imbalances of the past, given that now government must provide and treat all citizens equally. The tragedy of our past still haunts us in the form of the majority of South Africans that still suffer economically due to the previous education system that was focusing on churning out employees and not entrepreneurs.

It is in this light that the National Development Agency, an agency of government that reports to Parliament through the Department of Social Development, has been tasked with the mandate to

contribute towards the eradication of poverty by working with the civil society organisation to empower marginalised communities. Poverty continues to be perpetuated due to the lack of access to gainful economic activities at all levels of the economically active population groups in South Africa. Those mostly affected are particularly black women, youth, and those living with disabilities located in the former homelands, townships and informal settlements. We need to make a quantum leap from this state of insufficiency if we are to thrive as a nation.

It is with elation that I report ways of empowering our communities are being investigated as a means of ensuring sustainability and a legacy that will benefit these disadvantaged communities through the cooperatives vehicle which will empower participants economically as well. I therefore call upon all of government, the private sector and the CSO sector to partner with us in empowering local communities. Empowered communities are self-sufficient and are familiar with their Constitutional rights. They strive to improve their

living conditions and to ensure a brighter future for themselves and their dependants. When this happens, we can all be rest assured that we have done our part in improving the living conditions of our people.

Let us take bold steps and address the poverty in our country, once and for all!

---

**Ms Ruth Bhengu**  
Chairperson



## Overview by NDA CEO



Ms Reekeletseng Hlapolosa  
Acting Chief Executive Officer

*“Help us get closer to achieving our vision of “developing a society free from poverty”*

It is my pleasure to present to you this booklet containing a selection of projects that we fund in your province. The National Development Agency (NDA) is tasked with a challenging mandate of contributing towards the eradication of poverty, moreover, during an economically depressed era. It is only in improving the lives of marginalised communities and assisting them to contribute to the economy, even if it is at micro level to begin with, enabling us to move forward as a nation.

The NDA is a state poverty eradication institution tasked with the mandate to effectively respond to people who are severely affected by poverty, due to the lack of access and the means to generating a sustainable income through self-help projects. These are the people who access relief through the social security programmes implemented by government. It is also a fact that without the robust social security programmes put in place by the South African government, the state of poverty and inequalities would be in a far more critical condition.

The role of the NDA, within the Department of Social Development is to provide developmental programmes and projects that will support and provide a variety of interventions to move the South African Social Security Agency (SASSA) beneficiaries to, self-help developmental interventions that will lead to gainful economic activities, income to those disadvantaged individuals and families and the eradication of poverty. Working towards a common goal between all the functionaries within the Department of Social Development, known as the Social Development Portfolio, these entities formulated a strategic approach to respond effectively in eradicating poverty. As such, working towards a common goal ensures effectively designed developmental interventions and programmes that are impactful towards poverty.

The NDA will accelerate the District Development Model (DDM) approach which has demonstrated to be a useful framework to organise, develop, plan and deliver impactful developmental interventions to move poor people out of poverty in a coordinated way. This model provides better coordination and integration framework for all spheres of government, the private sector and civil society will focus their investments to one outcome – the eradication

of poverty, resulting in the positive impact on poverty eradication developmental efforts.

Only a multi-dimensional approach, with specific defined target groups and defined spatial perspective can provide pathways for moving affected communities from poverty to sustainable productive livelihoods through interventions led by communities themselves, organised as cooperatives, non-profit organisations and other structures.

I invite all those who want to contribute towards sustainable poverty eradication efforts to be in touch with us so that we can work together to turn poverty around and help our people live dignified lives.

---

**Ms Reekeletseng Hlapolosa**  
*Acting Chief Executive Officer*

## Partnership call to action



Mr Xolile Brukwe  
Senior Manager:  
Stakeholder Relations

The principal function of the National Development Agency's (NDA) partnership model is to ensure the sustainability of funded development programmes and interventions through establishing and maintaining strategic partnerships with other private, government and donor organisations. The National Development Agency (NDA) was established with the sole mandate to contribute towards the country's efforts of eradicating poverty and its causes, which is intrinsically part of the triple challenges the country is confronted with namely: poverty, inequality and unemployment. Albeit the limited resources and the struggle to link the yields to markets or value chain constraints, the NDA has over the years worked with civil society organisations (CSOs) on poverty eradication efforts and its causes.

The NDA's new strategic focus aims to address the historic challenges by fine-tuning a focus that aims towards more legitimacy, credibility, social capital and control over funded interventions and programmes – including the closer monitoring of outcomes and the deliberate impact measurement of projects. Secondly, there is a need to upscale the existing funded projects to reach full stability and sustainability potential through aggressive resource mobilisation efforts amongst other various stakeholders in the development space delivering and responding to real community needs that are in alignment with the District Development Model framework.

Partnerships amongst business sector and non-governmental organisations or CSOs are common across the world in the form of corporate social responsibility initiatives and undertakings. This cross-sector collaboration pools resources, competencies and knowledge together for achieving greater impact in joint projects. It is against this backdrop that the NDA's partnership model considers partnership best suited to derive maximum benefit in depressed communities using CSOs as its vehicle. Effective collaborations and partnerships consider service delivery imperatives, cost effectiveness, social cohesion and nation building as well as the need to respond to demands of a constantly changing society that must deal with the effects of poverty, unemployment and inequalities.

NDA poverty eradication interventions are aligned with the recognition that people living in economic isolation have skills, wisdom, assets, capacities and productive entrepreneurial energy. The missing link is their need to access and transmit this potential into viable economic activity that uplifts communities through the creation of jobs and sustainable livelihoods.

The NDA calls on private, public and donor organisations who share in this philosophy, that collaborating with communities for their own development, which must be bottom-up, organic and people-driven, which is the only sustainable means to free communities of poverty, inequality and unemployment.

We invite you to fill out the pledge card at the end of this publication to engage with us as a partner in development for a better South Africa, for all.

---

**Xolile Brukwe**  
*Senior Manager: Stakeholder Relations*



# About Gauteng Province

Gauteng is the smallest of South Africa's provinces, covering an area of 18 178km<sup>2</sup> or approximately 1.4% of the total surface area of South Africa. It is bordered by the Free State, North West, Limpopo and Mpumalanga provinces. While being the smallest province, it is also the most populous, being home to 13 399 725 people – 24.1% of the national population. Gauteng lies on the highest part of the interior plateau on the rolling plains of South Africa's Highveld.

Its capital is Johannesburg and it also contains the City of Pretoria, as well as the East Rand, West Rand and Vaal areas.

Gauteng continues to serve as the economic engine room of the country and the subcontinent, responsible for over 34.8% of the country's GDP. Gauteng is the powerhouse of South Africa and the heart of its commercial business and industrial sectors. The most important sectors contributing to GDP are finance, real estate and business services, manufacturing, and general government services. Gauteng is also the financial services capital of Africa. More than 70 foreign banks have their head offices here, as do at least the same number of South African banks, stockbrokers and insurance giants.

The major gold and diamond mining houses all have their headquarters in Johannesburg, the biggest being Anglo American and De Beers. Gold mining constitutes to 80% of Gauteng's mineral production output.

Gauteng is divided into three metropolitan municipalities, the City of Ekurhuleni, City of Johannesburg and City of Tshwane Metropolitan municipalities, as well as two district municipalities, which are further subdivided into six local municipalities.

Source: <https://municipalities.co.za/provinces/view/3/gauteng>





## COO's Message



Mrs Susan Khumalo  
NDA Chief  
Operations Officer

*"We cannot seek achievement for ourselves and forget about progress and prosperity for our community. Our ambitions must be broad enough to include the aspirations and needs of others, for their sakes and for our own", Cesar Chavez, Civil Rights Activist*

The reality of our time is that many of our fellow country men and women live in poverty due to socio-economic conditions, not only in our country, but due to what is happening around the world. It is only through collectively addressing the issue of poverty, as government, state owned entities, private sector and the civil society sector, that we can address many ills that plague our respective communities.

We are called upon to be that generation that brings meaningful changes in the lives of marginalised societies. The truth is that, as the NDA, our programmes and projects can go far if all role players come together, through the District Development Model, to address socio-economic issues that keep our communities stuck in the circle of poverty.

The NDA has a wealth of experience in community development that transcends the different aspects ranging from strengthening the institutional capacity of CSOs, that implement development programmes and projects in poor communities, to assisting community-based organisations that provide community empowerment services or producing products that are traded in the community and beyond.

Programme 2, which I head, is the engine room of the NDA's primary mandate of contributing towards the eradication of poverty. It is in

Programme 2 that the NDA is represented in all the nine provinces across the country. Our provincial offices, inclusive of district offices where we have a footprint, are ready to work with partners and stakeholders that are committed to make a meaningful change in South Africa.

In the past, in executing our mandate, we used the CSOs Development Model, as approved in the 2016/17 financial year and which clearly provided a complete package of interventions to ensure members of the CSOs and their beneficiaries are: selected based on assessed needs and level of needs; provided with a combination of interventions pipeline for registration if not registered, capacity building, grant funding and linkages to markets and possible funders. This is to increase their own resources; and assist in attaining sustainability levels for the management of the CSO and the financial resources to support their programmes.

This approach was found to be inadequate to achieve the expectations of the NDA mandate, demonstrated by increased levels of poverty and unemployment. In 2021/22, the NDA had to initiate a process of turnaround and come up with a strategy that will effectively respond to the mandate of contributing towards poverty eradication. The new model is premised on targeting beneficiaries within indigent households which would be empowered to participate in community economic development initiatives through the District Development Model.

Our rich knowledge of community development puts us at the forefront of being catalysts and key players when it comes to

understanding projects and programmes that could make sustainable impact in the lives of people that both the public and private sector may want to invest in. The NDA works hand-in-hand, using the public and private partnerships, through its provincial offices and the civil society sector, to support community economic development initiatives whose main target is indigent households' members who have to be graduated out of poverty.

The NDA, over the years, has learned that development requires concerted efforts from all interested parties ranging from communities themselves, government, civil society, to the private sector. Communities have all the required assets that can form the foundation for investment and support to create community led development and sustainability.

The skills development programme, also in partnerships with the SETAs, private institutions and established CSOs, is aimed at strengthening emerging CSOs to ensure that they are able to produce quality services and products which will meet international standards that enable them to compete in the mainstream economy.

---

**Mrs Susan Khumalo**  
NDA Chief Operations Officer



# Provincial response to Poverty Eradication



Ms Mapule Phora  
NDA Gauteng  
Provincial Manager

Former South African President, Tata Nelson Mandela once said *"Overcoming poverty is not a gesture of charity. It is an act of justice. It is a protection of fundamental human rights, the right to dignity and a decent life. While poverty persists, there is no true freedom."* It is against this ideal that the NDA Gauteng Province strives to form sustainable partnerships which will assist in dealing with poverty and its root causes.

Gauteng is the smallest province in terms of size, but it draws people from across the country and from all over the world as it is known as the economic hub of South Africa. With inward migration, the province also experiences high rates of what is known as urban poverty – characterised by lack of skills, lack of means of production as well as lack of tenure. The province remains the most populous in the country.

**The Gauteng Province Socio-economic priorities include the following:**

1. In all the regions, the revitalization of the township economy will be key, and it includes support to cooperatives and the sustainability of CSOs

2. Two priority areas have been identified in line with the district development model, which are Sedibeng and West Rand.

3. West Rand District is made up of Mogale City, Randfontein and Westonaria and is home to more than 820 995 people. The economic driver of this district was mining but its contribution is gradually decreasing, and this has contributed to high unemployment and higher poverty rates. This has resulted in the district targeting the tourism and agriculture sectors, and also focusing on formalising the Early Childhood Development sector.

4. The Sedibeng district consists of Midvaal-Sicelo, Meyerton farms, Lakeside, Emfuleni-Sebokeng, Bophelong, and Sharpeville/Boipatong. This region has the highest poverty and unemployment levels and our focus in this area has always been agriculture, Early Childhood Development, as well as the textile industry with special focus on the school uniform programme.

**Gauteng has five regions, made up of 3 Metropolitan Municipalities and 2 District Municipalities, listed below:**

- City of Joburg
- City of Tshwane
- Ekurhuleni

**We offer the following services in all areas:**

- Grant funding
- Capacity building
- Linkages and referrals
- Resource mobilization
- Partnering with relevant stakeholders such as Department of Social Development, Department of Basic Education, Department of Agriculture, National Lotteries Commission, Gautrain, Hope World Wide and local municipalities.

---

**Ms Mapule Phora**

*NDA Gauteng Provincial Manager*

# 8.1

## Amazing Grace Day and Night Care Centre



### Name of the CSO: Amazing Grace Day and Night Care

**Registration number:** 071-835

**Established:** 2007

**Location:** 1585 Bilankulu stand, Winterveld, City of Tshwane, Pretoria, 0198

**Sector:** Early Childhood Development (ECD)

**Contact person:** Ms Selina Mbatha (076 689 2331)

**NDA grant funding:** R 164 450.66

**Number of jobs created:** 12

**Population sector:** Children

#### Background

*"We are very grateful to the NDA for their assistance, they allowed us to maintain our infrastructure and managed to procure gardening equipment. We renovated the ceilings and tiled the floors, which allows for a warm and homely environment. The children also don't get sick so often, all of this helps them to focus and learn", said Ms Selina Mbatha.*

Amazing Grace Day and Night Care Centre (AGDNCC) is an NPO which was established in 2007 and was formally registered in 2009. The centre is located at 1585 Bilankulu Stand, Winterveldt, which is a township located in a north-western direction of the City of Tshwane. The ECD's aim is to provide early childhood development services to the community of Winterveldt.

#### NDA Intervention

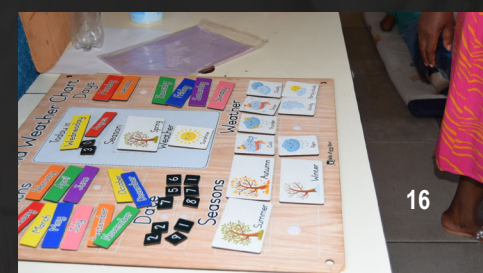
The NDA grant funding amount of R 164 450.66 went towards the refurbishing of classrooms, the installation of floor tiles in 4 classrooms, the procuring of kitchen appliances and office equipment enabling them to meet the norms and standards set out in the Children's Act. The centre also procured and installed motor skills developmental toys such as swings and a jungle-gym for the outdoor play area.

#### Immediate needs

The centre is in need of more classrooms to expand, furthermore there is a need for more educational toys and funds that will be used to start a food garden.

#### Other partners

The centre currently receives a subsidy of R318 192.00 per annum and it is paid in quarterly tranches of R79 548.00 from DSD. This is used for nutrition, practitioners and general salaries.





# 8.2

## Bona Lesedi Disability Centre



### Name of the CSO: Bona Lesedi Disability Centre

**NPO number:** 008 - 641

**Established:** 1997

**Location:** Plot 14 Koedoe Road & Du Toit Street, Timsrand, Diepsloot

**Sector:** Income Generation

**Contact person:** Mr Aggripa Thabede (071 480 3280) aggripa@bonalesedi.org.za

**NDA grant funding:** R 309 126.22

**Number of jobs created:** 17 (11 full-time & 7 volunteers)

**Population sector:** Persons living with disabilities

#### Background

*"The NDA helped us a lot and for that we will always be grateful. Due to them we managed to setup and maintain a vegetable garden which generates food for us and our children. We will sell some of our produce and use the money to maintain the centre", said Ms Novuwo Nyatela.*

Bona Lesedi Disability Centre (BLDC) is a Non-profit Organization (NPO) established in 1997 and officially registered in 1999. They are currently situated at plot 14, Koede

Road & Du Toit Street, Timsrand, Centurion which is less than 2 kilometres from Diepsloot. They operate on a two-hectare property which was donated to them by Abcon Group Foundation. The motive for starting the project was to develop services to persons living with disabilities, including services to persons with moderate to high support needs.

#### The NDA Intervention

The NDA's grant funding went towards procuring and installing 3 tunnels (10m×30m×4,2m) for vegetable production. Equipment was also supplied to stimulate the children that suffer from cerebral palsy syndrome, epilepsy, development delay, intellectual disability and obesity. This afforded an opportunity for vegetable production and Learning and Teaching Support Material (LTSM) to 138 beneficiaries living with disabilities.

#### Immediate needs

The centre is in need of funding to expand their building and equipment which will be used at the centre.

#### Other partners

Agricultural Learnership Program provides support from AgriSETA, Child and Youth Care Learnership Program in collaboration with Health and Welfare SETA (HWSETA), PWD and Family Self Help Program supported by the City of Joburg. They secured a long-term vibrant partnership with the University of Witwatersrand, wherein they give physio and occupational therapy students an opportunity to gain a practical understanding of disability and community development that they gained from theory.





# 8.3

## Hlubuko Farming and Agricultural Primary Cooperative



### Name of the CSO: Hlubuko Farming and Agricultural Primary Cooperative

**Registration number:** 2009/004226/24

**Established:** 2008

**Location:** J. G Strydom & Old Vereeniging Roads, Thinasonke Ext. 3, Alberton, 1449

**Sector:** Food security (Agriculture)

**Contact person:** Ms Pretty Mayisela (072 371 4799) pretty.mayisela@gmail.com

**NDA grant funding:** R 87 525.21

**Number of jobs created:** 21 (17 full time & 4 volunteers)

**Population sector:** Women, youth & men

#### Background

*"The NDA empowered this cooperative with the procurement of the tunnel, an irrigation system and diesel generator. All that brought a big change to our productivity. We do still face challenges due to seasonal risks like hailstorms during summer and frost during winter, and will need to require funds to install a 1-hectare shade-net to protect our crops. Our goal is to provide a sustainable supply to Pick 'n Pay and Spar", said Ms Pretty Mayisela.*

Hlubuko Farming and Agricultural Primary Cooperative (HFPC) was established in 2008

with a focus on the agricultural sector in order to combat food insecurity in the local community. The cooperative operates on 2.5 hectares of land. Their core business relates to agricultural activities such as crop production and poultry. They are also involved in the livestock of goats and chickens while they also plant herbs which are then processed into juice, oil, body lotion and dry herbs. These activities have an important role in alleviating poverty and creating jobs.

#### NDA Interventions

The grant went towards the installation of 3 phase electrical equipment and material including a power connection to the site. They also upgraded their borehole with the required equipment along with procuring a 10m×30m tunnel.

#### Immediate needs

The organisation needs to secure the infrastructure, agricultural equipment and material which can lead to the envisaged breakthrough.

#### Other partners

HFPC received assistance from Rand Water Foundation (RWF) and the Independent Development Trust (IDT) for the payment of stipends to 17 individuals, fencing of the land and provision of tools and protective clothing in 2014 and 2015.

The project has a working relationship with the City of Ekurhuleni (CoE) and wants to formalize a business relation that will see the municipality buying their produce during events and other social programmes. They have also established relations with Joburg Market as they supply them with most of their produce at a market related price.





# 8.4

Letimbe Designer and Projects  
Primary Cooperative Limited



## Name of the CSO: Letimbe Designer and Projects Primary Cooperative Limited

**Registration number:** 2010/006393/24

**Established:** 2010

**Location:** 1170 Komane Street, Room C29, Atteridgeville, City of Tshwane, Ward 62, Pretoria, 0008

**Sector:** Income generation (Textile)

**Contact person:** Mr Julius Kgobe (079 152 0442)

**NDA grant funding:** R 483 729.02

**Number of jobs created:** 6

**Population sector:** Women, men and youth

### Background

*"The funding assisted us to purchase an embroidery machine. This financial assistance allowed us to increase our productivity and sustain the current 6 jobs in the cooperative, along with cutting costs as it saved us a lot of time and resources," said Mr Mokoena of Letimbe.*

Letimbe Designer and Projects Primary Cooperative Ltd. (LDPPC) was founded and launched in September 2010. The cooperative specializes in the textile sector and it manufactures school uniforms and regalia for churches, organizations and social clubs. They are situated within the municipality office on a Permission to Occupy (PTO) basis, meaning that they are free to rent for a period of 5 years for business purposes only.

### The NDA Intervention

The NDA initially awarded the cooperative with a grant of R 74 122.20 in 2019 to assist them in the procuring of machinery and equipment to increase the output. Then in 2022, a sustainability grant was requested by the cooperative with the aim of purchasing a four-headed embroidery machine so that productivity and workflow could increase and to cut costs related to embroidery. The sustainability grant was R 409 607.00. LDPPC spent R 336 340 on an embroidery machine resulting in a saving of R 36 029, due to a discount offered by the service provider. The savings were then used to purchase two additional overlocker sewing machines and raw materials. Between the initial grant and the sustainability grant, the NDA's total investment in LDPPC and its projects was R 483 729.40.

### Immediate needs

The cooperative would appreciate assistance with more sewing machines and equipment, so that they can accommodate the demand and take on more schools to sew for on the Gauteng School Uniform Project. Having an embroidery function would enable LDPPC to increase revenue and sustain operations.

### Other partnerships

The cooperative through its members, has been part of the Gauteng School Uniform Project for over 5 years, with an increase in the number of allocated schools after the NDA support. In 2017, Bogale Primary school contacted LDPPC with a request for uniform for 1282 children which was successful and maintained a relationship to this day. They also secured a contract with the Department Social Development (DSD) to manufacture school jerseys for schools in the City of Tshwane for the 2019/20 financial year for a total of 5000 students with a total value of R 800 000.00. Lastly, they are in positive discussions with the Zion Christian Church (ZCC) leadership regarding the supply of church regalia.



# 8.5

## Name of the CSO: Boiketlo Foundation

---

**NPO registration number:** 271-860

**Established:** 2015

**Location:** Carletonville Central Business District, Merafong Local Municipality

**Sector:** Education

**Contact person:** Thandeka (066 200 5730)

**NDA grant funding:** R 83 500.83

**Number of jobs created:** 7

**Population:** Persons living with disability

### Background

*"The NDA had a positive impact on our organisation. Reflecting to when we started as an organisation, we did not have equipment. With the NDA's grant funding we are progressing to right where we needed to be 5 years ago", said Thandeka.*

Boiketlo Foundation was established in 2015 and became legally registered as a non-profit organisation in 2018. Boiketlo Foundation caters for intellectually and physically disabled learners, and it is registered with the Department of Education as a primary school.

The foundation has 53 eligible learners for the academic year of 2018/2019. Learners start being involved in Boiketlo Foundation from the age of 18 in the field of specialisation. Boiketlo Foundation has 7 teachers who specialise and have expertise in different skills development programmes offered by the foundation.

### NDA Intervention

The NDA grant funding went towards procuring 1 embroidery machine, 2 cutting tables, 2 over lockers, a sewing machine, material and art & craft material. The grant will ensure that the learners continue to have access to skills development opportunities, it will improve job placement opportunities and eradicate poverty.

### Immediate needs

The organisation is in need of an embroidery machine.

### Other partnerships

Boiketlo Foundation has partnered with the Department of Education.



# 8.6

## Reotlwile – Sizwile Primary Cooperative



### Name of the CSO: Reotlwile – Sizwile Primary Cooperative

**Registration number:** 2009/004878/24

**Establishment:** 2009

**Location:** 2842 Heidelberg Road, Ratanda, 1441

**Sector:** Income Generation (Textile)

**Contact person:** Esther Lucy Moloi (078 551 4587)

**NDA grant funding:** R 97 439.66

**Number of jobs created:** 9

**Population sector:** Women and youth

#### Background

*“The financial aid provided by the National Development Agency allowed us to buy machinery, this has helped us a lot as we now save a lot of time, and can supply for the demands we have. We have also seen an increase in productivity”,* said Ms. Esther Moloi, Chairperson of the cooperative.

Reotlwile – Sizwile Primary Cooperative (RSPC) was established in 2009. Their core business is sewing, enabling them to produce different types of garments such as school uniforms, traditional attire and PPE like masks. They operate in Ratanda, which is situated under the Lesedi Local Municipality, where they rent a workshop from the municipality for the cost of R500 per month, inclusive of water and electricity. The

poverty and high unemployment in their community motivated them to launch the co-operative as they aimed to offer experience and more skills to the women and youth.

#### The NDA interventions

An amount of R 97 439.66 was granted to the cooperative by the National Development Agency and has seen them have a positive economic and social impact in the community of Ratanda. Through their products and services, the financial assistance has enabled them to expand and reach their optimal production capacity because of the additional equipment bought. It also contributes towards employment opportunities, especially to the vulnerable groups, by providing skills and enterprise development in Ratanda.

#### Immediate needs

The cooperative aims to procure equipment and materials, which will increase the garments production. They also wish to maximize the potential of the cooperative in the sewing and fashion industry, this will assist them in having stable markets. Capacity building in institutional strengthening intervention for good governance and accountability is needed.

#### Other partnerships

RSPC is a black-owned enterprise run by 5 members who have vast experience as they have been involved in the textile sector for over 15 years, serving as directors and an additional 4 workers who oversee the day-to-day proceedings at the cooperative. The cooperative has been involved in various projects with Tswinyane Adult School, Department of Social Development, South African Social Security Agency, and South African Local Government Association.





# 8.7

## Tshedimosho Farm Hub



### Name of the CSO: Tshedimosho Farm Hub

**Registration number:** K2019/170415

**Established:** 2016

**Location:** 1648 Khuvutla Street, Mofolo Central, Soweto, 1800

**Sector:** Food Security

**Contact person:** Mr Tebogo Tlhopane (082 594 3724)

**NDA grant funding:** R 90 428.42

**Number of jobs created:** 8

**Population sector:** Youth

#### Background

*"We are very grateful to the NDA for their intervention, because of them we managed to get tunnels and an irrigation system which increased our productivity and reach", said Mr Tebogo Tlhopane, Chairperson of Tshedimosho.*

Tshedimosho farm hub (TFH) is a non-profit company (NPC), which was established on the 16<sup>th</sup> of May 2016 and was formally registered in 2019. They currently operate within the premises of Tshedimosho Primary School where they have a 20 years lease

agreement to operate on +3600 square meters of land. Their core business is local food production and processing for economic transformation, with the aim of increasing people's participation in Agri-processing and enabling them to supply fresh and less expensive produce for a healthy lifestyle.

#### The NDA interventions

The National Development Agency's (NDA) grant funding of R 90 428.42 which was utilized to procure equipment and repair/upgrade the existing ones. The NDA also offered institutional strengthening of capacity to staff and other members of the NPC. The funds assisted in the renovation of damaged tunnels and tunnel doors, shade nets and the irrigation system used. The assistance came in handy as it minimised some of the challenges they were facing such as pests, water conservations, drainage, load shedding and harsh weather conditions.

#### Immediate needs

The farm hub is in serious need of a new irrigation system and transport to assist in the collection of fertilisers, since they fetch fertilisers far from the farm.

#### Other partnerships

The NPC has been receiving technical support from the Gauteng Department of Agriculture and Rural Development (GDARD), who donated seeds and seedlings, provided seasonal training, farmers networking seminars and technical support.





# 8.8

## Wheels of Change



### Name of the CSO: Wheels of Change

**Registration number:** 179-695

**Established:** 2016

**Location:** 6120 Ditshego Street, Sotho Section, Vosloorus, City of Ekurhuleni, Ward 44

**Sector:** Income Generation (Skills Development)

**Contact person:** Mr Thami Mankenze (083 965 5772)

**NDA grant funding:** R 522 800.00

**Number of jobs created:** 21

**Population sector:** Persons living with disabilities and unemployed people

#### Background

*"The funding from the NDA has assisted us in implementing our programmes, like the Agricultural Planting Programme which is aimed at eradicating food insecurity and the Volunteer Programme which is also aimed at creating employment. These initiatives have helped us provide work experience and employability skills to people living with disabilities and the unemployed youth. Amongst other things, it has provided a sustainable platform for the individuals in the programme as they can now grow and harvest their own vegetables instead of buying them", said Mr Thami Mankenze.*

Wheels of Change (WoC) was founded and launched in 2016 and is situated within Vosloorus. The land measures 3000 square metres (0,25ha) and is used for agricultural

activities in tunnels and open land. The development centre focuses on uplifting individuals with disabilities and unemployed people around the community. The centre aims to implement food security and other sustainable income generating projects.

#### The NDA interventions

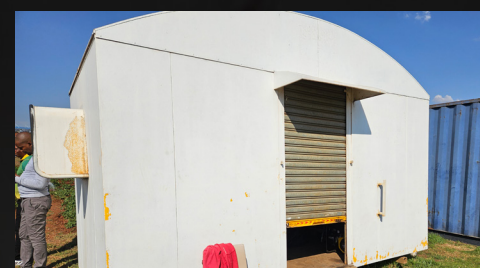
NDA's involvement through financial and technical support has aided the centre by opening additional opportunities. This assistance went a long way in achieving the centre's overall objective, which was to procure equipment and materials for food security and income generating activities in order to sustain jobs and be able to create more. WoC was initially granted funding of R 212 000.00 to manage 18 volunteers and after the success of that programme, the centre has been approved a further R310 800.00 as part of the Presidential Employment Stimulus Package for 2023, bringing the total funding to R 522 800.00.

#### Immediate needs

The centre wants to increase the number of tunnels so that it can increase the production and diversity of crops, acquire a pack house, and establish other income generation projects such as baking (confectionery) and sewing (textile) to create jobs in the community. Their long-term goal is to be an influential player in the local and provincial economy.

#### Other partnerships

Wheels of Change is overseen by a board of members and an executive committee which simultaneously run the everyday proceedings at the centre. They managed to attract a number of funders and donors after the NDA's intervention like the Department of Social Development, City of Ekurhuleni, NDA, Gauteng Department of Agricultural and Rural Development and The Department of Sports, Arts, Culture & Recreation.



## DIRECTORY OF OTHER FUNDED PROJECTS IN GAUTENG

	Project Name	Project Location	Contact Details	Sector	Activities	Amount Approved
1.	Tswelopele Early Childhood Development Centre	Munsieville ext 4	-	ECD	Teaching & Learning	R48 470.41
2.	Tshedimosho Farm Hub	Mofolo South Central, Soweto	-	Food Security	Vegetable Production	R90 428.42
3.	Nothani Trading Primary Cooperative Limited	Tembisa	-	Income generation	Textile	R761 542.94
4.	Ipadts 33 Cooperative Limited Cooperative	Garankuwa Industrial Area	-	Manufacturing	Manufacturing cleaning detergents and soaps	R761 542.94
5.	Youth For Survival	Pretoria CBD	-	Social Welfare & Skills development	Training, providing shelter for Abused women, Feeding scheme	R761 542.94

	Project Name	Project Location	Contact Details	Sector	Activities	Amount Approved	No. of Jobs
6.	Ujima Bakwena Primary Cooperative	Roodepoort - City of Johannesburg	-	Income generation	Shoe Manufacturing or Production	R890 070.00	7 permanent jobs 80 workers during production of school shoe contracts
7.	Bonang Masikhule Primary	Chamdor Mogale City	-	Income generation	Shoe Manufacturing or Production	R99 335.00	6 permanent jobs 45 workers during production of school shoe contracts





## INTEREST TO PARTNER PLEDGE

### The Need for All Hands on Deck

The NDA's efforts are aimed at the eradication of poverty and all its causes. To achieve this vision, the NDA alone will not be able to achieve its mission of breaking the cycle of poverty. It needs all the instruments of the state, private sector and civil society working in coordinated and integrated posture to focus on those classified as poor, who reside in the fringes of developed and affluent locations of the country.

Making a dent in the war against poverty requires investments from every sector to enable the poor to fully and actively participate in creating a future they want, the quality of life they aspire to have and the South Africa they want to live in. Therefore, South Africa needs all hands on deck to achieve the vision and the expectation of citizens living in a country where hunger, poverty and hopelessness are not an everyday struggle.

### INTEREST TO PLEDGE

I \_\_\_\_\_ representative of \_\_\_\_\_ in my capacity as \_\_\_\_\_  
wish to partner and pledge support to the NDA as follows:

- ☐ Mobilization and assessment
- ☐ Formalisation
- ☐ Capacity-building interventions
- ☐ Grant Funding & investments
- ☐ Linkages to markets
- ☐ Follow up meeting
- ☐ Mentorship

in the area of \_\_\_\_\_ within \_\_\_\_\_ District of the Gauteng province.

I may be contacted on:



\_\_\_\_\_



\_\_\_\_\_



\_\_\_\_\_

I accept further correspondence from the NDA using these channels.

☐ Yes

☐ No



NOTES:

---

---

---

---

---

---

---

---

---

---

NOTES:

---

---

---

---

---

---

---

---

---

---



NOTES:

---

---

---

---

---

---

---

---

---

---

NOTES:

---

---

---

---

---

---

---

---

---

---



**NDA**

National  
Development  
Agency

[www.nda.org.za](http://www.nda.org.za)



UNLOCKING  
POTENTIAL

THE NATIONAL DEVELOPMENT AGENCY